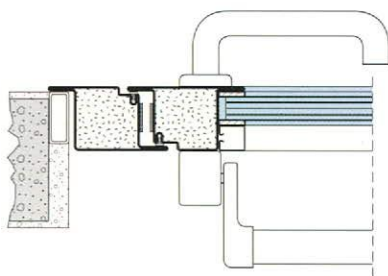


A = 100 with pre-frame
 B = 65 Push Bar
 LNP with A = LT - 420
 LNP with B = LT - 350

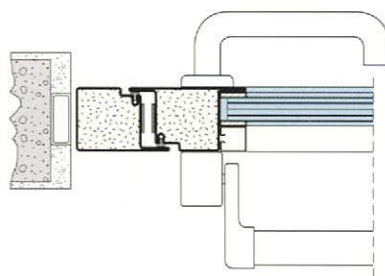
LT = LM - 7 with pre-frame
 HT = HM - 5 with pre-frame
 LT = LM - 10 on concrete
 HT = HM - 5 on concrete

Same leaves $\begin{cases} X = Y \\ Y/X = (LP : 2) + 69 \end{cases}$

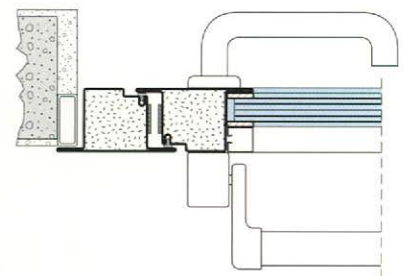
Different size leaves $\begin{cases} X = LP \text{ 1st leave} + 84 \\ Y = (LP - LP \text{ 1st leave}) + 54 \end{cases}$



MOUNTING WITH EXTERNAL REBATE
 TYPE "Z"



MOUNTING WITH BLOCK FRAME
 TYPE "L"



MOUNTING WITH INTERNAL REBATE
 TYPE "T"